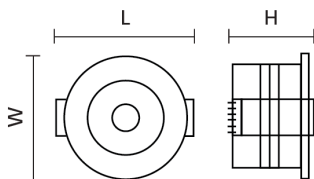


Installation Engineers Contact Details:				Luminaire Ref / Location							
Name:		Tel:									
Luminaire Details:				Full Recharge Duration 24Hours		Duration: 3hrs		Lamp Type:			
ROUTINE TEST RECORD											
Test Type	Year 1		Year 2		Year 3		Year 4		Year 5		
	Signed	Date	Signed	Date	Signed	Date	Signed	Date	Signed	Date	
Functional											
Functional											
Functional											
Functional											
Functional											
Functional											
Functional											
Functional											
Functional											
Functional											
Functional											
Functional											
3hr Duration											

### Dimensions:

Part No.	Description	L (mm)	W (mm)	H (mm)	Weight
430958	Woodhead Emergency Downlight Open Area 2W 6000K White/Black E-SEL3 Emergency 130°	65	65	40	0.173Kg
430959	Woodhead Emergency Downlight Corridor 2W 6000K White/Black E-SEL3 Emergency 155 x 110°	65	65	40	0.173Kg



### End Of Life Disposal:

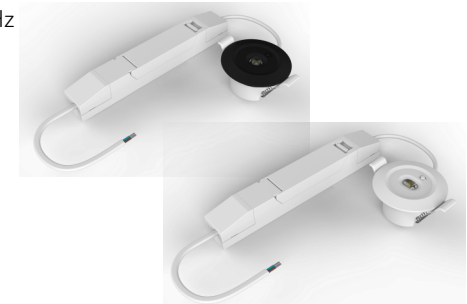
Disassembly instructions for end of life disposal available on website.  
 Disposal of Electronic Equipment WEEE Directive 2002/96/EC This product falls within the scope of the Waste Electrical & Electronic Equipment Directive (WEEE), which means the product should not be disposed of as normal household waste. Please recycle where facilities exist or check with your Local Authority. RoHS – All components and materials used in this product are RoHS 2002/95/EC compliant. Specifications may change from time to time. The information contained in this leaflet is for guidance only and should not be considered as always accurate and should be treated as not representative.

## Installation Instructions



# Woodhead Emergency Downlight

Input	220 ~ 240V AC 50/60Hz
Power	1W
Operating Temp	0 ~ +30°C
Battery	LiFeP04
Recharge Time	24 Hours
Function	Manual/Self Test
Light Source Energy Rating	N/A

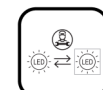


### Box Contents:

- Woodhead Emergency Downlight
- Black Bezel



Selectable  
Emergency



Professionally  
Replaceable



Professionally  
Replaceable



Class  
II



Scan for more  
Information.

### Tools Required For Installation:

- 50mm Hole saw



**READ THESE INSTRUCTIONS THOROUGHLY BEFORE INSTALLATION**  
**KEEP THESE INSTRUCTIONS FOR FUTURE REFERENCE.**

### IMPORTANT:

This product must be installed by a qualified electrician or competent person, and in accordance with current building and IET wiring regulations.

### Warranty:

This luminaire is warranted for a period of 5Years from the date of purchase\*\*. The backup battery pack in the emergency version is warranted for a period of 5 Years. The warranty could be invalidated should the light fitting not be installed according to these instructions, outside the scope of the specification or the product has been altered or tampered with in any way. Please see website for terms and conditions.



**WARNING: Risk of electric shock!**  
**Isolate the mains power before proceeding.**

- Turn off the mains power before performing inspections, installation, or removal
- Verify that the supply voltage is correct by comparing it with the luminaire label information
- It is the installers responsibility to ensure installation is suitable for the total load of the luminaire(s). The supply cable, fuses/circuit breakers must be correctly rated for the electrical load and considering for any transient inrush currents that may occur.
- Do not perform insulation strength or resistance tests on installed luminaire(s) connected

**Wiring instructions for units equipped an with EMERGENCY function:**

Emergency lighting luminaries must be installed and maintained in accordance with the emergency lighting standard BS 5266-1

- For the emergency unit to work correctly, please ensure that an uninterrupted permanent live feed is present and is connected directly to the 'Permanent Live' terminal of the mains terminal block. Please ensure there are no switches, PIRs etc within the permanent live feed, constant switching of the emergency pack could result in premature battery failure.
- Following power up the green LED indicator should illuminate to indicate charging. If power to the unit is disrupted or isolated, the unit indicating green LED will switch off, triggering the emergency LEDs to illuminate.
- When self-test mode is selected, 24hrs from connection to mains power, a 3hrs duration test will be performed automatically.

**Installation Procedure:**

1. Disconnect mains supply.
2. Using Ø50mm hole saw, cut hole in required ceiling location.
3. Connect battery and LED pin spot to emergency pack.
4. Connect Live (L) and Neutral (N) from emergency pack to mains input as shown.  
(4). **Terminal block not supplied.** Using suitable terminal block recommended Wago 222.
5. Select desired test mode (Self Test / Manual Test).
6. Place emergency pack into ceiling and using fixing levers fit LED pin spot into desired hole.
7. Reconnect mains supply.

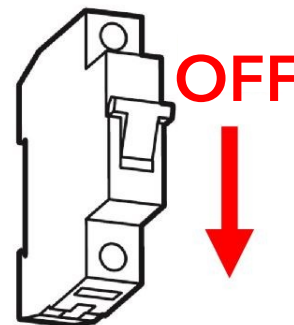
**Emergency Indication:**

	Colour	LED Indication	Status
	Green	Permanent Green	Normal Function
	Green	Fast Flashing Green (0.1 sec on, 0.1 sec off)	Function Test In Progress
	Green	Slow Flashing Green (1 sec on, 1 sec off)	Duration Test In Progress
	Red	Permanent Red	Load Failure
	Red	Slow Flashing Red (1 sec on, 1 sec off)	Battery Failure

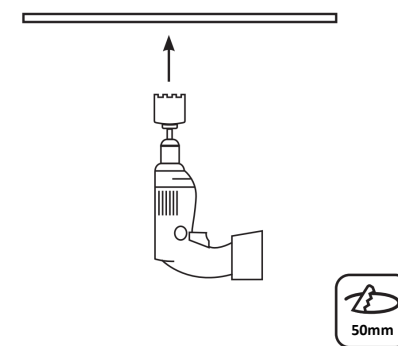
\*\*To reset a failure error by pressing test switch longer than 3 seconds at emergency mode.

\*\*If fitting alternative bezel, please ensure mains supply is disconnected.

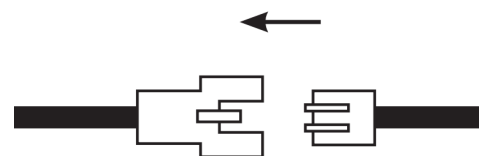
1.



2.



3.



4.

Mains input → ← From Emergency Pack

N - NEUTRAL = Blue

L - PERMANENT LIVE (PL) = Brown

Brand	Wago
Connector Type	Lever
Current Rating	32A
Model Name	222 Series
Product Type	Connector
Suitable Cable Size	0.08 - 4mm <sup>2</sup>



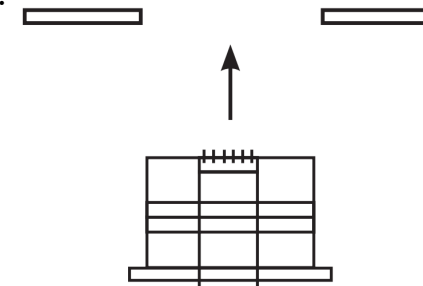
5.

Self test

Manual test



6.



7.

